



## EVALUATING THE TAXONOMIC STATUS OF THE BALKAN WALL LIZARD *PODARCIS TAURICUS* (PALLAS, 1814) FROM THE ANATOLIAN PART OF ÇANAKKALE (TURKEY) USING MITOCHONDRIAL DNA

| Nurşen Çördük<sup>1</sup> | Çiğdem Gül<sup>1,\*</sup> | Murat Tosunoğlu<sup>1</sup> | and | Nurhayat Özdemir<sup>2</sup> |

<sup>1</sup> Çanakkale Onsekiz Mart University | Faculty of Arts and Sciences | Department of Biology | Çanakkale | Turkey |

<sup>2</sup> Recep Tayyip Erdoğan University | Faculty of Arts and Sciences | Department of Biology | Rize | Turkey |

| Received | 26 April 2018 |

| Accepted | 15 May 2018 |

| Published 23 May 2018 |

### ABSTRACT

**Background:** *Podarcis muralis*, *Podarcis siculus*, and *Podarcis tauricus* are known to extend their range into the territory of Turkey. A new locality of *P. tauricus* was discovered in the Çardak Lagoon, in the Anatolian part of Çanakkale, Turkey. There has been no report on the evaluation of the taxonomic status of newly recorded population in the Anatolian side of Çanakkale. **Objectives:** For this reason, the purpose of this study is to investigate the phylogenetic position of this newly recorded population using partial 16S rRNA and cytochrome b gene sequences. **Methods:** 16S rRNA and *cyt b* gene sequences of the Çardak population were compared with the Gelibolu, Kırklareli (Thrace Region) and Şile populations (Anatolian part of İstanbul). We reconstructed the phylogenetic tree according to Neighbor-Joining tree approach using MEGA v.6. Also we built a haplotype network to examine the haplotype diversity and structure for the concatenated mt DNA dataset. **Results:** Neighbor-Joining tree and the haplotype network have the same topology showing the newly discovered population grouped together with the other *P. tauricus* populations. **Conclusions:** According to our results, Çardak population is genetically almost similar with Gelibolu population, which isolated by Dardanelles strait.

**Key Words:** 16S rRNA; *cyt b*; Çardak Lagoon; Çanakkale; *Podarcis tauricus*

### 1. INTRODUCTION

The genus *Podarcis* Wagler, 1830 belong to the family of Lacertidae and including 23 species [1, 2]. The origin of the genus *Podarcis* is western European [3]. Only three *Podarcis* species; *Podarcis muralis* (Laurenti, 1768), *P. siculus* (Rafinesque, 1810) (introduced by humans) and *P. tauricus* (Pallas, 1814) have been recorded in Turkey [4].

Balkan Wall Lizard, *Podarcis tauricus* ranges from Crimean Peninsula and southern Ukraine, through southern Moldova, eastern and southern Romania (excluding the Danube Delta) to Bulgaria, FYROM, eastern and southern Serbia, Albania, mainland Greece, Hungary, and northwestern Turkey (on both sides of the Bosphorus) according to IUCN Red List and Psonis et al., (2018) [5].

*Podarcis tauricus* is a medium-sized lizard with a total body length of up to 22 cm (Fig 1) and listed as Least Concern (LC) according to IUCN Red List. It inhabits low and sparse vegetation with pebbly substrates and open places with sandy or it lives in a forest and feeds with insects [6] (Fig 2). The dorsum is greenish or bluish and beside the dorsum, there is a longitudinal line with light color [4, 7].



**Figure 1:** General view of female specimen of *Podarcis tauricus*.

The first records of *P. tauricus* from European part of Turkey were reported from İstanbul [8-10]. There have been many studies on new locality records of this species in Thrace region [6,11-13]. The first Anatolian record (Beykoz, İstanbul) has given by Bird (1936) [14]. A new locality was added from Polenezköy in the Anatolian part of İstanbul [15,16]. The other records of the species were reported in the northwestern Anatolia [7,13,17-22]. A new locality of *P. tauricus* was discovered in the Çardak Lagoon, in the Anatolian part of Çanakkale by Gül and Tosunoğlu (2017) [23]. All samples from the European and Anatolian parts of Turkey belonged to the subspecies *P. t. tauricus* [7,16,24].

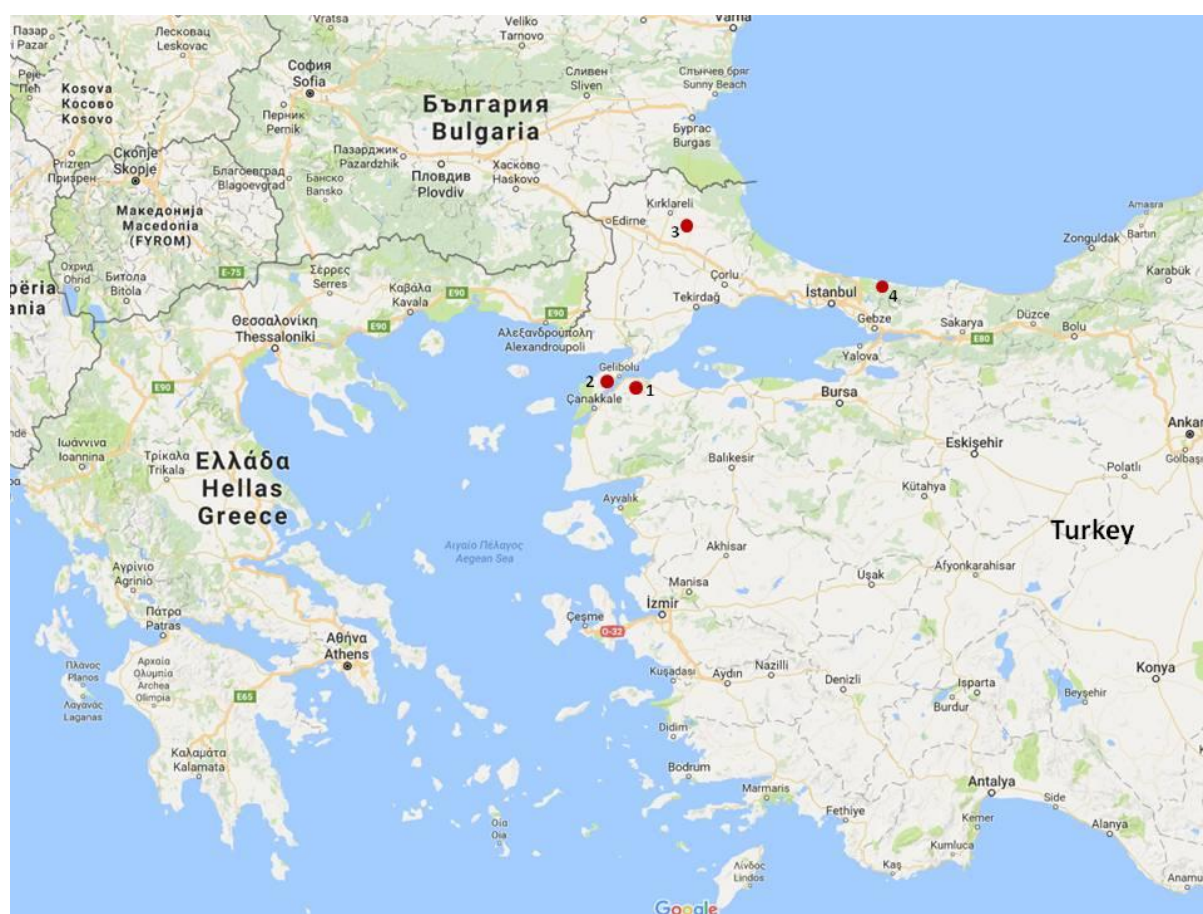
There are many phylogeographic and phylogenetic studies about *Podarcis* genus [3,25-27]. Although there have been molecular phylogeny studies on *Podarcis tauricus* from Turkey to date [24,27], there has been no report on the evaluation of the taxonomic status of newly recorded population (Çardak) in the Anatolian side of Çanakkale.

In this study, we used partial ribosomal subunit 16S rRNA and cytochrome *b* gene sequences to investigate the taxonomic status of *P. tauricus* population from Çardak Lagoon (Anatolian part of Çanakkale), in comparison to Gelibolu, Kırklareli (Thrace Region) and Şile populations (Anatolian part of İstanbul) in Turkey.

## 2. MATERIALS AND METHODS

### 2.1. Collection of Animal Samples

In this study, 16 individuals of *P. tauricus* collected from four different localities in Turkey were analyzed (Fig 2). The four adult specimens of *P. tauricus* were collected from Çardak Lagoon (Çanakkale, Turkey) on March 08, 2016. Çardak Lagoon is located between the coordinates 40° 22' 51" - 40° 23' 36" N and 26° 42' 45" - 26° 44' 18" E and occupies an area of 1.2 square kilometers. Çardak Lagoon is located on the northeastern coast of the Çanakkale Strait (Dardanelles) separating Europe and Asia in the province of Çanakkale, Turkey. Gelibolu peninsula is situated in Europe part of Çanakkale. Four *P. tauricus* specimens were captured from the city centre of Gelibolu (Thrace region) (40° 24'N, 26° 39'E; 8 m. a.s.l.) in October, 2008. Kırklareli is located in the east of Thrace region. Four *P. tauricus* specimens were captured from the Pınarhisar (Kırklareli, Thrace region) (41° 38'N, 27° 30'E; 281 m. a.s.l.) in April, 2009. Şile is located in Anatolian part of İstanbul. Four *P. tauricus* specimens were captured from the Şile (İstanbul) (41°10'N, 29°36'E; 70 m. a.s.l.) in April, 2016. All samples were collected with the guidelines of the local ethics committee; Çanakkale Onsekiz Mart University, 2016/03–01) in Turkey. While the specimens were still alive, color pattern characteristics were recorded and colored photographs were taken.



**Figure 2:** The locations where samples of the *Podarcis tauricus* populations used in the present study were collected. 1. Çardak; 2. Gelibolu; 3. Kırklareli, 4. Şile.

## 2.2. DNA extraction, amplification and sequencing

Muscle samples were ground to a fine powder in liquid nitrogen using a micro pestle. Total genomic DNA was extracted using a Genomic DNA Mini Kit (Geneaid Biotech) following the manufacturer's instructions. Total DNA concentrations were determined on a 1% agarose gel and estimated spectrophotometrically with Spectroquant Pharo 300 Spectrophotometer. Partial sequences of the mitochondrial genes encoding 16S ribosomal RNA (16S) and cytochrome *b* (*cytb*) were selected for the molecular phylogenetic analysis. We amplified an approximately 303-bp fragment from the mitochondrial *cyt b* gene using the primer pair L14724 and H15149 primers [28,29]. PCRs were performed using the following cycling conditions in the presence of 3 mM MgCl<sub>2</sub>: an initial denaturing step at 94°C for 5 min; 35 cycles of denaturing at 92°C for 45 s, annealing at 49°C for 45 s, and extending at 72°C for 60 s; and a final extending step of 72°C for 5 min. In addition, we amplified an approximately 470-bp fragment from the mitochondrial 16S rRNA gene using the primer pair 16Sar-L and 16Sbr-H [30], following the PCR conditions described in Sotiropoulos et al. (2007) [31]. Successfully amplified products were sequenced by BM Lab Systems (Ankara, Turkey) using the same primers as in PCR.

## 2.3. Alignment and phylogenetic analysis

We classified the individuals from newly reported localities using with mitochondrial gene regions (16S; 470 bp and *cyt b*; 303 bp). The determined 16S rRNA and *cyt b* sequences have been deposited in GenBank (MF348205-MF348208 for *cyt b* and MF348209-MF348212 for 16S). We analyzed the genetic relation between the newly discovered population and already known subspecies (*P. t. tauricus*, *P. t. thasopulae* and *P. t. ionicus*) in the literature.

All sequences corrected and equalized of their length using with Bioedit [32]. Alignments of both mitochondrial genes were concatenated using Geneious v.7.1 [33] and obtaining in a single combined data matrix. We generated phylogenetic trees for concatenated nucleotide sequence (773 bp) using the *P.t. tauricus*, *P.t. thasopulae* and *P.t. ionicus* sequences obtained from Genbank (Table 1). We reconstructed the phylogenetic tree according to NJ approach using MEGA v.6 [34]. *P. gaigae* was assigned as outgroup for phylogenetic analyses. Also we built a haplotype network to examine the haplotype diversity and structure for the concatenated mt DNA dataset. A median-joining network was constructed using the software PopArt [35] with the parameter epsilon set to 0.

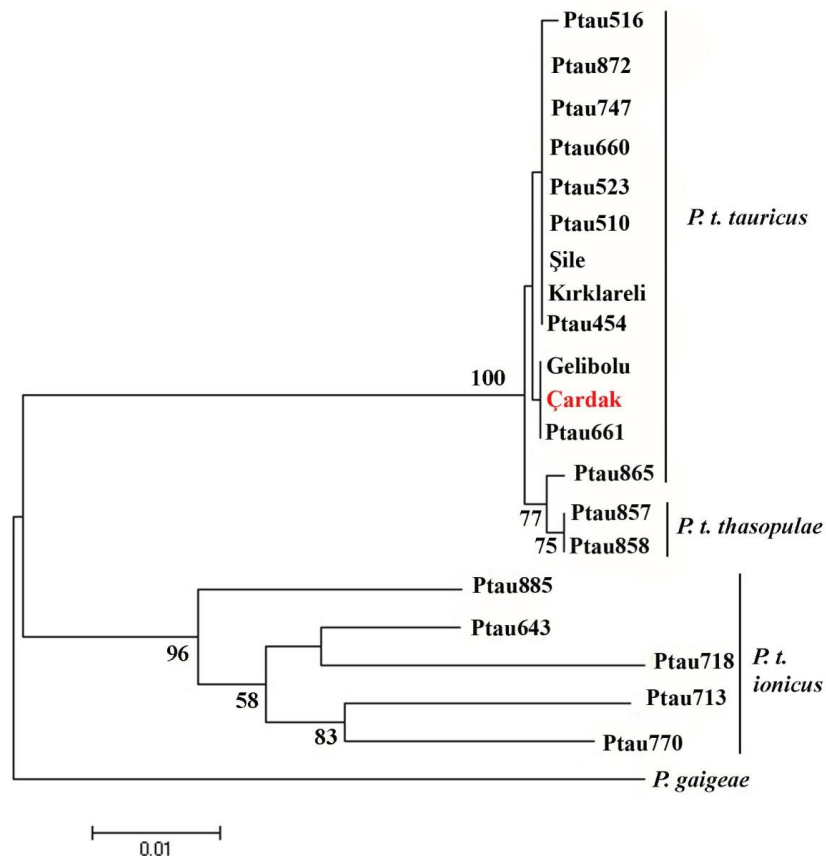
**Table 1:** List of specimens *Podarcis* used, with haplotypes, locality, country, the accession numbers, and references.

| Haplotypes                               | Locality                            | Country | Accession Number (16S rRNA) | Accession Number ( <i>cyt b</i> ) | References          |
|------------------------------------------|-------------------------------------|---------|-----------------------------|-----------------------------------|---------------------|
| Ptau_Cardak<br><i>P. t. tauricus</i>     | Cardak (Çanakkale)                  | Turkey  | MF348210                    | MF348205                          | Present Study       |
| Ptau_Sile<br><i>P. t. tauricus</i>       | Sile (İstanbul)                     | Turkey  | MF348212                    | MF348206                          | Present Study       |
| Ptau_Gelibolu<br><i>P. t. tauricus</i>   | Gelibolu (Çanakkale)                | Turkey  | MF348211                    | MF348207                          | Present Study       |
| Ptau_Kirklareli<br><i>P. t. tauricus</i> | Pınarhisar (Kirklareli)             | Turkey  | MF348209                    | MF348208                          | Present Study       |
| Ptau660<br><i>P. t. tauricus</i>         | Keşan                               | Turkey  | KX658353                    | KX658051                          | Psonis et al (2017) |
| Ptau454<br><i>P. t. tauricus</i>         | Azov Sea, coast of Kerch Peninsula  | Crimea  | KX658243                    | KX657939                          | Psonis et al (2017) |
| Ptau510<br><i>P. t. tauricus</i>         | Larisa – Kalyvia, 3.5km NE          | Greece  | KX658286                    | KX657982                          | Psonis et al (2017) |
| Ptau516<br><i>P. t. tauricus</i>         | Grevena – Voio Mt., Aidona          | Greece  | KX658291                    | KX657988                          | Psonis et al (2017) |
| Ptau523<br><i>P. t. tauricus</i>         | Trikala – Antichasia Mt., Korydalos | Greece  | KX658296                    | KX657994                          | Psonis et al (2017) |
| Ptau661<br><i>P. t. tauricus</i>         | Paragem II pedras berma estrada     | Turkey  | KX658354                    | KX658052                          | Psonis et al (2017) |
| Ptau747<br><i>P. t. tauricus</i>         | Florina – Prespes lakes             | Greece  | KX658383                    | KX658081                          | Psonis et al (2017) |

|                                    |                                     |         |          |          |                          |
|------------------------------------|-------------------------------------|---------|----------|----------|--------------------------|
| Ptau865<br><i>P.t. tauricus</i>    | Nestos - Keramoti                   | Greece  | KX658421 | KX658122 | Psonis et al (2017)      |
| Ptau872<br><i>P. t. tauricus</i>   | Pella – Agra lake                   | Greece  | KX658426 | KX658127 | Psonis et al (2017)      |
| Ptau857<br><i>P. t. thasopulae</i> | Kavala, Thasos Isl.                 | Greece  | KX658414 | KX658114 | Psonis et al (2017)      |
| Ptau858<br><i>P. t. thasopulae</i> | Kavala, Thasos Isl.                 | Greece  | KX658415 | KX658115 | Psonis et al (2017)      |
| Ptau643<br><i>P.t. ionicus</i>     | Golemaj                             | Albania | KX658340 | KX658038 | Psonis et al (2017)      |
| Ptau713<br><i>P.t. ionicus</i>     | Aitoloakarnania-<br>Trichonida lake | Greece  | KX658359 | KX658057 | Psonis et al (2017)      |
| Ptau718<br><i>P.t. ionicus</i>     | Korinthia- Ancient Feneos           | Greece  | KX658364 | KX658062 | Psonis et al (2017)      |
| Ptau770<br><i>P.t. ionicus</i>     | Eptanisa Islands-<br>Zakynthos      | Greece  | KX658397 | KX658097 | Psonis et al (2017)      |
| Ptau885<br><i>P.t. ionicus</i>     | Arkadia - Kosmas                    | Greece  | KX658439 | KX658140 | Psonis et al (2017)      |
| <i>P. gaigeae</i>                  | -                                   | Greece  | AY768731 | AY768775 | Poulakakis et al (2005a) |

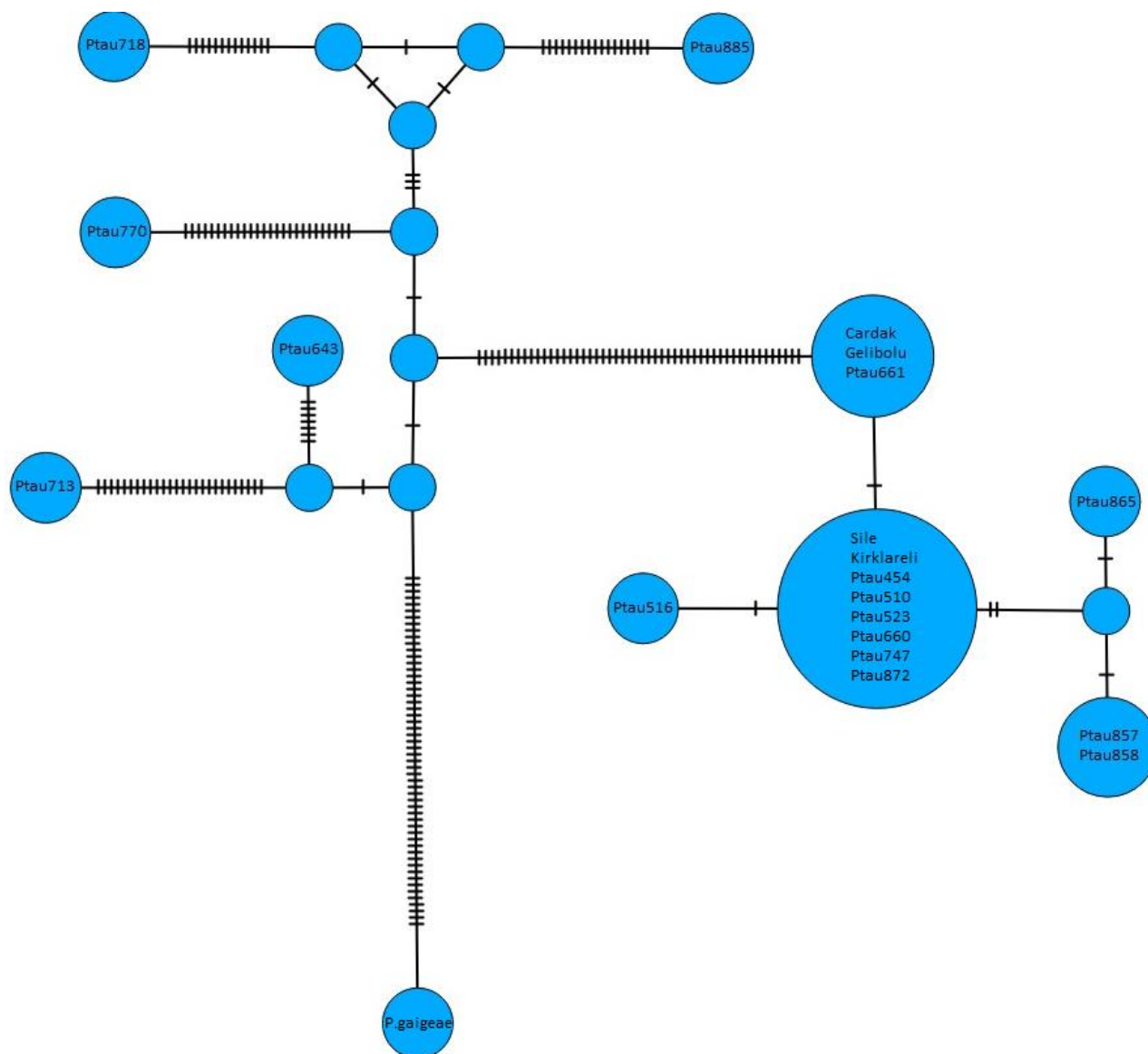
### 3. RESULTS

The resulting tree topology (Fig 3) has two main clades: (1) *P. t. tauricus* and *P. t. thasopulae* are grouped together in the same clade as in the study of Psonis et al. (2017) [27], and this clade is containing also the newly discovered population of *P. tauricus tauricus*. (2) This clade consists of *P. t. ionicus* subspecies from Greece and Albania (Table 1).



**Figure 3:** Phylogenetic tree based on Neighbour-Joining (NJ).

This NJ tree topology also confirmed the suggestion of Psonis et al. (2017) [27] that *P. tauricus* should be revised by splitting the species into two separate taxa (subspecies *P. t. tauricus* and *P. t. thasopulae*, together as *Podarcis tauricus* and *Podarcis ionicus*). The haplotype network has the same topology with the NJ tree that *P. t. tauricus* haplotypes are grouped together (Fig 4). As it can be seen from the network, Çardak specimens grouped together with Gelibolu and Ptau661 haplotypes with only a base difference. Geographically Gelibolu situated opposite side of Çardak in Thrace region, so the absence of genetic difference is expected. According to Psonis et al., (2017) [27] the locality name of the Ptau661 haplotype is paragem II pedras berma Estrada. Unfortunately, there is no such a locality in Turkish/ Turkey. But according to the map in the study of Psonis et al., (2017) [27], it is a locality between the cities İzmit and Adapazari in Anatolian part of Turkey.



**Figure 4:** The haplotype network of the concatenated mitochondrial genes.

## 4. DISCUSSION

Our analyses indicate that four examined populations belong to the *P. tauricus tauricus* subspecies in the literature. Also, the specimens from four populations used in this study were similar to *P. t. tauricus* in terms of coloration and pholidosis [7, 12]. *P. tauricus* specimens taken from the same region were evaluated morphologically (coloration and pholidosis) and found to be similar to the subspecies of *P. tauricus tauricus* by Gül and Tosunoglu (2017) [23]. Phylogenetic and morphologic studies with populations showing the distribution of Thrace and Anatolia are available; and in these studies, it has been reported that nominate subspecies distributes in Turkey [7,24,27]. Until the last study [5], *P. tauricus* is divided into three recognized subspecies [36]. The first one is *P. t. tauricus* (Pallas, 1814); the second one is *P. t. ionicus* (Lehrs, 1902) and the last one is *P. t. thasopulae* (Kattinger, 1942). Psonis et al., (2018) carried out that *Podarcis tauricus* has no subspecies. The two subspecies (*P. t. tauricus* and *P. t. thasopulae*) which appear to be phylogenetically

indistinguishable are grouped together in *P. tauricus*. Besides this, the subspecies *P. tauricus ionicus* is defined as a species and hereafter named *Podarcis ionicus* [5,27].

## 5. CONCLUSION

Concluding, in our molecular study, when we compare the newly reported population from Anatolian part of Çanakkale with the other *P. tauricus* populations, Çardak population is genetically almost similar with Gelibolu population, which isolated by Dardanelles strait.

## Acknowledgment

This study was funded by the Scientific and Technological Research Council of Turkey (TUBITAK Project No. 113Z098).

## 6. REFERENCES

- Sindaco, R., Venchi, A., Grieco, C. The Reptiles of the Western Palearctic, Volume 2. Annotated Checklist and Distributional Atlas of the Snakes of Europe, North Africa, Middle East and Central Asia, with an Update to Volume 1. Edizioni Belvedere; 2013. Available: [http://www.academia.edu/9925752/Sindaco\\_Venchi\\_and\\_Grieco\\_The\\_Reptiles\\_of\\_the\\_Western\\_Palearctic\\_vol\\_2](http://www.academia.edu/9925752/Sindaco_Venchi_and_Grieco_The_Reptiles_of_the_Western_Palearctic_vol_2)
- Uetz, P., Hošek, J. 2017. The Reptile Database. URL: <http://www.reptile-database.org> (accessed 30 October 2017).
- Oliverio, M., Bologna, M.A., Mariottini, P. Molecular biogeography of the Mediterranean lizards *Podarcis* Wagler, 1830 and *Teira* Gray, 1838 (Reptilia, Lacertidae). *J Biogeogr.* 2000;27: 1403-1420. Available: [https://www.jstor.org/stable/2656085?seq=1#page\\_scan\\_tab\\_contents](https://www.jstor.org/stable/2656085?seq=1#page_scan_tab_contents).
- Baran, İ., Ilgaz, Ç., Avcı, A., Kumlutaş, Y., Olgun, K. Türkiye Amfibi ve Sürüngenleri. Ankara, Turkey: TÜBİTAK Popüler Bilim Kitapları; 2012 (in Turkish).
- Psonis, N., Antoniou, A., Karameta, E., Leaché A.D., Kotsakioz P., Darriba D., Kozlov A., Stamatakis A., Poursanidis D., Kukushkin O., Jablonski D., Crnobrnja-Isailović J., Gherghel I., Lymberakis P., Poulakakis N. Resolving complex phylogeographic patterns in the Balkan Peninsula using closely related wall-lizard species as a model system. *Molecular Phylogenetics and Evolution.* 2018;125: 100-115. Available: <https://www.sciencedirect.com/science/article/pii/S1055790317305304>.
- Tosunoğlu, M., Gül, Ç., Uysal, İ. Çanakkale Amfibi ve Sürüngenleri. Özen reklam, Çanakkale, Turkey, ISBN 978-605-82906-1-7; 2017. p 1-72. (In Turkish).
- Bülbül, U., Kurnaz, M., Eroğlu, A.İ., Koç, H., Kutrup B. A new locality record of *Podarcis tauricus tauricus* (Pallas, 1814) (Squamata:Lacertidae) from the western Black Sea region of Turkey. *Türk. J. Zool.* 2015;39: 981-986. Available: <http://dergipark.gov.tr/download/article-file/135793>.
- Schreiber, E. Herpetologia Europaea: Eine systematische Bearbeitung der Amphibien und Reptilien Welche Bischer in Europa Aufgefunden Sind. 2<sup>nd</sup> ed. Jena, Germany, Gustav Fischer Verlag; 1912. (in German). Available: <https://www.biodiversitylibrary.org/page/13311386#page/7/mode/lup>
- Cyren, O. Klima und eidechsen Verbreitung. Eine Studie der geographischen Variation und Entwicklung einiger Lacerten, insbesondere unter Berücksichtigung der klimatischen faktoren. *Meddelanden Fran Göteborgs Musei Zoologiska Avdelning.* 1924; 29:1-97. (in German). Available: [http://www.podarcis.de/AS/Bibliografie/BIB\\_427.pdf](http://www.podarcis.de/AS/Bibliografie/BIB_427.pdf)
- Andren, C., Nilson, G. Observations on the herpetofauna of Turkey in 1968-1973. *British Journal of Herpetology.* 1976;5: 575-584.
- Clark, R.J., Clark, E.D. Report on a collection of amphibians and reptiles from Turkey. *Occasional Papers of the California Academy of Sciences.* 1973;104: 1-62.
- Başoğlu, M., Baran, İ. Türkiye Sürüngenleri. Kısım I, Kaplumbağa ve Kertenkeleler. Ege Üniv. Fen Fak. Kitaplar Serisi, İzmir, No.76. 1977. p 66-67 (in Turkish).
- Franzen, M. Die Eidechsenfauna (Lacertidae) der Türkei. *Die Eidechse.* 1990;1: 3-9 (in German). Available: [http://podarcis.de/AS/Bibliografie/BIB\\_5587.pdf](http://podarcis.de/AS/Bibliografie/BIB_5587.pdf).
- Bird, C.G. The distribution of reptiles and amphibians in Asiatic Turkey with notes on a collection from the vilayets of Adana, Gaziantep and Malatya. *Annals and Magazine of Natural History.* 1936;18: 257-281.
- Bodenheimer, F.S. Introduction into the knowledge of the Amphibia and Reptilia of Turkey. *İstanbul Üniversitesi Fen Fakültesi Mecmuası.* 1944;9: 1-110.
- Mertens, R. Amphibien und Reptilien aus der Türkei. *İstanbul Üniversitesi Fen Fakültesi Mecmuası.* 1952; B17: 40-75 (in German).
- Nilson, G., Andren, C., Flardh, B. DiVipern in der Türkei. *Salamandra.* 1988; 24: 215-247 (in German).
- Bergmann, J., Norström, M. Neues über *Podarcis taurica* (Pallas, 1814) in der asiatischen Türkei. *Salamandra.* 1990;26: 85-86 (in German).
- Teynie, A. Observations herpétologiques en turquie, 2<sup>ème</sup> Partie. *Bulletin de la Société Herpétologique de France, Paris.* 1991;58: 20-29 (in French).
- Baran, İ., Yılmaz, İ., Kete, R., Durmuş, H. Batı ve orta Karadeniz Bölgesinin herpetofaunası. *Turkish Journal of Zoology.* 1992;16: 275-288 (in Turkish).
- Mulder, J. Herpetological observations in Turkey (1987-1995). *Deinsea.* 1995; 2: 51-66. <http://natuurtijdschriften.nl/search?identifier=538572>
- Sindaco, R., Venchi, A., Carpaneto, G.M., Bologna, M.A. The reptiles of Anatolia: a checklist and zoogeographical analysis. *Biogeographica.* 2000; 21: 441-554. <https://escholarship.org/uc/item/15d084dw>
- Gül, Ç., Tosunoğlu, M. *Podarcis tauricus* (Pallas, 1814), new to the Anatolian part of the province of Çanakkale, Turkey. *Herpetozoa.* 2017; 30 (1/2): 78-80. Available: [https://www.zobodat.at/pdf/HER\\_30\\_1\\_2\\_0078-0080.pdf](https://www.zobodat.at/pdf/HER_30_1_2_0078-0080.pdf).
- Koç, H., Bülbül, U., Kurnaz, M., Eroğlu, A.İ., Kutrup, B. Phylogenetic relationships of *Podarcis siculus* (Rafinesque-Schmaltz, 1810) and *Podarcis tauricus* (Pallas, 1814) in Turkey, based on mitochondrial DNA. *Mitochondrial DNA A.* 2017;4: 1-10 Available: <https://www.tandfonline.com/doi/full/10.1080/24701394.2017.1342245>.
- Poulakakis, N., Lymberakis, P., Valakos, E., Pafilis, P., Zouros, E., Mylonas, M. Phylogeography of Balkan wall lizard (*Podarcis taurica*) and its relatives inferred from mitochondrial DNA sequences. *Mol. Ecol.* 2005a;14: 2433-2443. Available: <https://www.ncbi.nlm.nih.gov/pubmed/15969725>.
- Poulakakis, N., Lymberakis, P., Valakos, E., Zouros, E., Mylonas, M. Phylogenetic relationships and biogeography of *Podarcis* species from the Balkan Peninsula, by bayesian and maximum likelihood analyses of mitochondrial DNA sequences. *Mol. Phyl. Evol.* 2005b;37: 845-857. Available: <https://www.sciencedirect.com/science/article/pii/S1055790305001995>.
- Psonis, N., Antoniou, A., Kukushkin, O., Jablonski, D., Petrov, B., Crnobrnja-Isailović, J., Sotiropoulos, K., Gherghel, J., Lymberakis, P., Poulakakis, N. Hidden diversity in the *Podarcis tauricus* (Sauria, Lacertidae) species subgroup in the light of multilocus phylogeny and species delimitation. *Molecular Phylogenetics and Evolution.* 2017;106: 6-17. Available: <https://www.ncbi.nlm.nih.gov/pubmed/27640951>.
- Kocher, T.D., Thomas, W.K., Meyer, A., Edwards, S.V., Pääbo, S., Villablanca, F.X., Wilson, A.C. Dynamics of mitochondrial DNA evolution in animals: amplification and sequencing with conserved primers. *Proc. Natl. Acad. Sci.* 1989;86(16): 6196-6200. Available: <https://www.ncbi.nlm.nih.gov/pubmed/2762322>.
- Irwin, D.M., Kocher, T.D., Wilson, A.C. Evolution of the cytochrome b gene of mammals. *J. Mol. Evol.* 1991; 32:128-144. Available: <https://link.springer.com/article/10.1007/BF02515385>.
- Palumbi, S., Martin, A., Romano, S., McMillan, W.O., Stice, L., Grabowski, G. The Simple Fool's Guide to PCR. Version 2. University of Hawaii, Zoology Department, Honolulu, HI; 1991.
- Sotiropoulos, K., Eleftherakos, K., Džukić, G., Kalezić, M.L., Legakis, A., Polymeni, R.M. Phylogeny and biogeography of the alpine newt *Mesotriton alpestris* (Salamandridae, Caudata), inferred from mtDNA sequences. *Mol. Phylogenet. Evol.* 2007;45: 211-226. Available: <https://www.sciencedirect.com/science/article/pii/S1055790307000760>.

32. Hall, T. BioEdit: a user-friendly biological sequence alignment editor and analysis program for Windows 95/98/NT. *Nucleic Acids Symp. Ser.* 1999; 41: 95–98. Available: <http://brownlab.mbio.ncsu.edu/JWB/papers/1999Hall1.pdf>
33. Kearse M, Moir R, Wilson A, Stones-Havas S, Cheung M, Sturrock S, Buxton S, Cooper A, Markowitz S, Duran C et al. Geneious Basic: an integrated and extendable desktop software platform for the organization and analysis of sequence data. *Bioinformatics* 2012; 28: 1647–1649. Available: <https://www.ncbi.nlm.nih.gov/pubmed/22543367>.
34. Tamura, K., Stecher, G., Peterson, D., Filipiński, A., Kumar, S. MEGA6: Molecular Evolutionary Genetics Analysis Version 6.0. *Mol. Biol. Evol.* 2013; 30: 2725–2729. Available: <https://www.ncbi.nlm.nih.gov/pubmed/24132122>.
35. Bandelt, H.-J., Forster, P., Rohlf, A. Median-joining networks for inferring intraspecific phylogenies. *Mol. Biol. Evol.* 1999;16: 37– 48. Available: <https://www.ncbi.nlm.nih.gov/pubmed/10331250>.
36. Sindaco, R., Jeremčenko, V.K. The Reptiles of the Western Palearctic. 1. Annotated Checklist and Distributional atlas of the turtles, crocodiles, amphisbaenians and lizards of Europe, North Africa, Middle East and Central Asia. *Monografie della Societas Herpetologica Italica*. Latina, Edizioni Belvedere; 2008: 579 p. Available: <https://www.nhbs.com/the-reptiles-of-the-western-palearctic-volume-1-book>

**Cite this article:** Nurşen Çördük, Çiğdem Gül, Murat Tosunoğlu and Nurhayat Özdemir. EVALUATING THE TAXONOMIC STATUS OF THE BALKAN WALL LIZARD *PODARCIS TAURICUS* (PALLAS, 1814) FROM THE ANATOLIAN PART OF ÇANAKKALE (TURKEY) USING MITOCHONDRIAL DNA. *Am. J. innov. res. appl. sci.*. 2018; 6(5): 227-233.

This is an Open Access article distributed in accordance with the Creative Commons Attribution Non Commercial (CC BY-NC 4.0) license, which permits others to distribute, remix, adapt, build upon this work non-commercially, and license their derivative works on different terms, provided the original work is properly cited and the use is non-commercial. See: <http://creativecommons.org/licenses/by-nc/4.0/>